

INVERTED FLUORESCENCE MICROSCOPE



Inverted LED Fluorescent Microscope, Trinocular, B/G

- 3 Holes Fluorescent Slide + 5W LED Fluorescent Illumination
- Seidentopf Trinocular Head, Light Split Switch E100:P0 / E20:P80
- LWD Infinity Plan Objectives Bright Field & Phase Contrast Observation Supported
- LWD Condenser N.A.0.3 Working Distance 72mm, Up To 195mm Without Condenser
- Standard Halogen 6V30W Koehler Illumination, 5W LED Optional for Choice



Seidentopf Trinocular Head Inclined 45°
Interpupillary Distance 48~76mm
WF10x/22mm, Dia.30mm, High Eyepoint, Diopter Adjustable



Seidentopf Trinocular Head Light Split
Switch E100:P0 / E20:P80



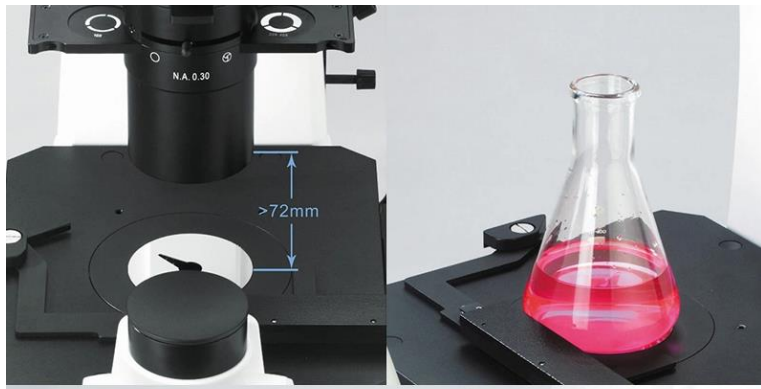
Koehler Illumination Halogen 6V/30W For SLV-40i
Koehler Illumination 5W LED For SLV-40i-L



Filters: Blue, Dia.34mm; Green, Dia.34mm



LWD Infinity Plan Fluorescent Objectives 10x, 20x, 40x
LWD Infinity Plan Phase Contrast Fluorescent Objectives 20x



Long Working Distance, Working Distance
72mm (With Condenser), 195mm (Without Condenser)



LWD Infinity Plan Fluorescent Objectives 10x, 20x, 40x
LWD Infinity Plan Phase Contrast Fluorescent Objectives 20x



Mechanical Stage Size 210x241mm, Round Slide Size Φ 110mm



Coaxial Coarse & Fine Focusing

Epi Fluorescence Illumination

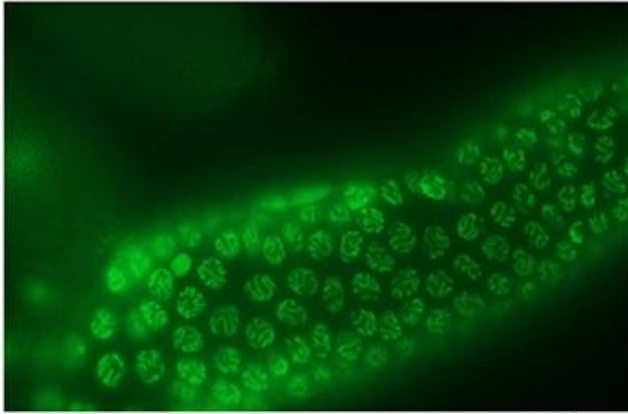
- Fluorescent Filter,
- 5W LED Lamp House
- 5W LED Power Box
- Ultraviolet Protection Barrier
- Fluorescent Slide Unit 3 Holes, With Filter Diaphragm, Center Adjustable
- 5W LED B,G Lamp Each 1 pc



5W LED Lamp House & Power Box, Ultraviolet Protection Barrier



Case Show

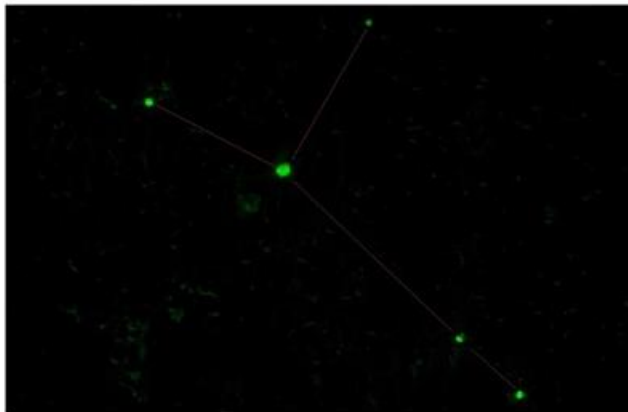
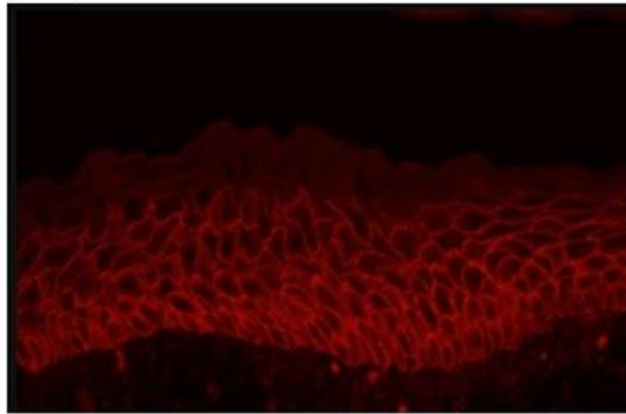


Galloping chromosome

The gonads of *C. elegans* are long-shaped, and the cells in the specific period of meiosis are concentrated in specific areas. The period of the cells can be easily distinguished by observing the morphological characteristics of the chromosomes. The different forms of chromosomes in different periods are like showing us our unique dance.

Huge spark

Visually show the morphological characteristics and levels of stratified squamous cells. Preparation method: Immunofluorescence staining (E-cadherin) was performed on the oral mucosa tissue of mice, and the staining results were observed under a fluorescence microscope and photographed.

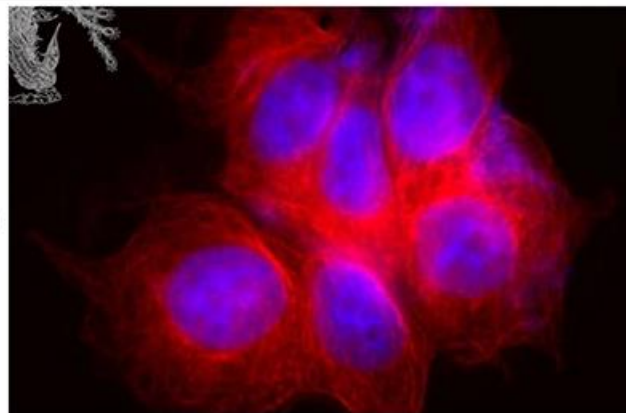


Cancer Galaxy

The GFP fluorescent plasmid expressed in stable phase was transferred to *S. aureus*, and after treatment with high concentration antibiotics overnight, the formation of drug-resistant retaining cells was detected by fluorescence inverted microscope. *S. aureus* with the GFP plasmid elicited green fluorescence, forming a pattern similar to that of the Cancer galaxies.

Phoenix tail feather

By immunofluorescence assay, the TUBULIN protein was labeled with a red fluorescent secondary antibody (rhodamine) to show the morphology of the microtubules, and the nuclei were stained with DAPI to make them blue. The processed cell slides were placed under a fluorescence microscope for observation and imaging.



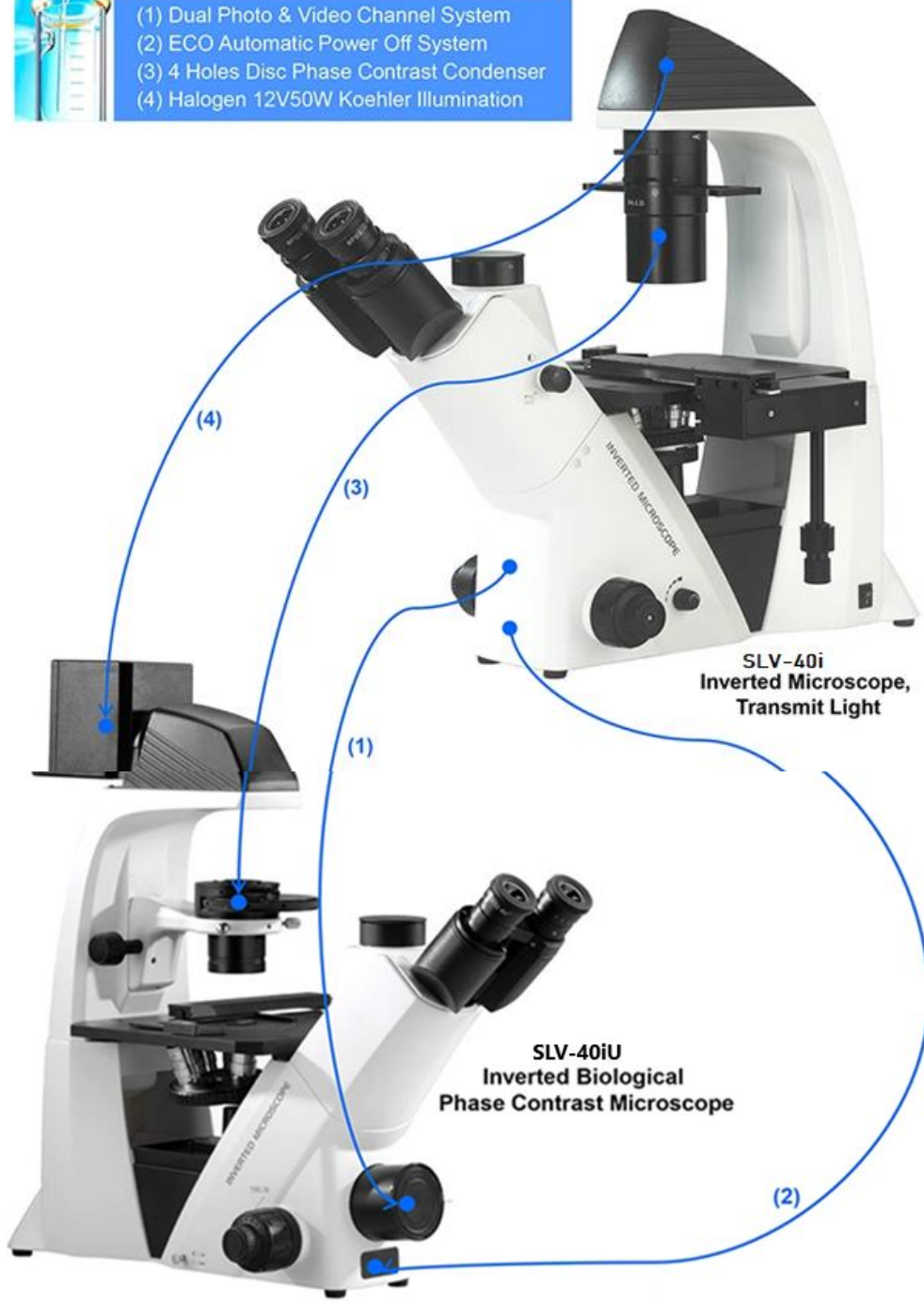
| Items | SLV-40iFL Inverted Fluorescent Microscope Specification | 40iFL2 | 40iFL4 | 40iFL2L | 40iFL4L |
|--|--|--------|--------|---------|---------|
| Head | Siedentopf Trinocular Head Inclined 45°, Interpupillary Distance 48~76mm, Light Split Switch E100:P0 / E20:P80 | ● | ● | ● | ● |
| Eyepiece | WF10x/22mm, Dia.30mm, High Eyepoint, Dioptre Adjustable | ●● | ●● | ●● | ●● |
| | WF15X/16mm, Dia.30mm, High Eyepoint, Dioptre Adjustable | ○○ | ○○ | ○○ | ○○ |
| | WF20X/12mm, Dia.30mm, High Eyepoint, Dioptre Adjustable | ○○ | ○○ | ○○ | ○○ |
| Nosepiece | Quintuple | ● | ● | ● | ● |
| LWD Infinity Plan Semi-APO Objectives Update 2021 | L Plan FL 4x/0.11 W.D.=12.1mm | ○ | ○ | ○ | ○ |
| | L Plan FL 10x/0.25 W.D.=10.3mm | ● | ● | ● | ● |
| | L Plan FL 20x/0.45 W.D.=5.8mm | ● | ● | ● | ● |
| | L Plan FL 40x/0.65 W.D.=5.1mm | ● | ● | ● | ● |
| LWD Infinity Plan Phase Contrast Semi-APO Objectives Update 2021 | L Plan FL PHP 4x/0.10 W.D.=9.2mm | ○ | ○ | ○ | ○ |
| | L Plan FL PHP 10x/0.25 W.D.=10.3mm | ○ | ○ | ○ | ○ |
| | L Plan FL PHP 20x/0.45 W.D.=5.8mm | ● | ● | ● | ● |
| | L Plan FL PHP 40x/0.65 W.D.=5.1mm | ○ | ○ | ○ | ○ |
| Phase Contrast | Centering Telescope 11x | ○ | ○ | ○ | ○ |
| | Annular Spot 4x | ○ | ○ | ○ | ○ |
| | Annular Spot 20x/ 40x | ● | ● | ● | ● |
| | Annular Spot 10x | ● | ● | ● | ● |
| Working Stage | Mechanical Stage Size 210x241mm, Round Slide Size Φ110mm | ● | ● | ● | ● |
| | Attached Mechanical Stage, Available For 96 Holes Plate, Moving Range 128x80mm | ○ | ○ | ○ | ○ |
| | Culture Dish Holder 65mm | ○ | ○ | ○ | ○ |
| | Culture Dish Holder 54mm | ● | ● | ● | ● |
| | Culture Dish Holder 35mm | ○ | ○ | ○ | ○ |
| | Holder For Blood Cell Counter | ○ | ○ | ○ | ○ |
| | Universal Holder (New Accessory 2021) | ○ | ○ | ○ | ○ |
| | Round Glass Holder (New Accessory 2021) | ○ | ○ | ○ | ○ |
| Condenser | Long Working Distance, Quickly Detachable, N.A.0.3, Working Distance 72mm (With Condenser), 195mm (Without Condenser). | ● | ● | ● | ● |
| Illumination | Koehler Illumination Halogen 6V/30W, Input Voltage 100V~240V | ● | ● | ● | ● |
| | Koehler Illumination 5W LED, Input Voltage 100V~240V | ○ | ○ | ○ | ○ |
| Power | ECO, Auto Power Off System. Power Off Automatically Upon User Leaving 10 Minutes, Power on Automatically Upon User Approaching Detected, This Function Can Be Shut Down Manually | ○ | ○ | ○ | ○ |
| Filter | Blue, Dia.34mm | ● | ● | ● | ● |
| | Green, Dia.34mm | ● | ● | ● | ● |
| | Amber, Dia.34mm | ○ | ○ | ○ | ○ |

| | | | | | |
|--|--|---|---|---|---|
| | Grey, Dia.34mm | ○ | ○ | ○ | ○ |
| Adapter | C-Mount 0.5x, Focus Adjustable | ○ | ○ | ○ | ○ |
| | C-Mount 0.75x, Focus Adjustable | ○ | ○ | ○ | ○ |
| | C-Mount1.0x, Focus Adjustable | ○ | ○ | ○ | ○ |
| Epi Fluorescence Illumination | Upgrade From Inverted Microscope With B, G Fluorescent Filter, 100W Mercury Lamp House 100W Mercury Power Box, Digital Disp. Fluorescent Slide 3 Holes Ultraviolet Protection Barrier China 100W Mercury Lamp | ● | ○ | | |
| | Upgrade From Inverted Microscope With B, G, V, VU Fluorescent Filter, 100W Mercury Lamp House 100W Mercury Power Box, Digital Disp. Fluorescent Slide 3 Holes Ultraviolet Protection Barrier China 100W Mercury Lamp | ○ | ● | | |
| Epi Fluorescence LED Illumination | Upgrade From Inverted Microscope With B, G Fluorescent Filter, 5W LED Lamp House 5W LED Power Box Ultraviolet Protection Barrier Fluorescent Slide 3 Holes, With Filter Diaphragm, Center Adjustable 5W LED B, G Lamp Each 1 pc | | | ● | ○ |
| | Upgrade From Inverted Microscope With B, G, V, VU Fluorescent Filter, 5W LED Lamp House 5W LED Power Box Ultraviolet Protection Barrier Fluorescent Slide 3 Holes, With Filter Diaphragm, Center Adjustable 5W LED B,G,V,VU Lamp Each 1 pc | | | ○ | ● |
| Fluorescent Filter | Upgrade to Chrome Fluorescent Filters, B,G,V,UV Available | | | | |
| Package | Packing Size: 660mmx590mmx325mm Fluorescence Carton Size 520x470x235mm | | | | |
| Weight | Gross Weight: 18 kgs, Net Weight: 13.5 kgs | | | | |

Note: "●" In Table Is Standard outfits, "○" is Optional Accessories.



- (1) Dual Photo & Video Channel System
- (2) ECO Automatic Power Off System
- (3) 4 Holes Disc Phase Contrast Condenser
- (4) Halogen 12V50W Koehler Illumination



Product Accessories



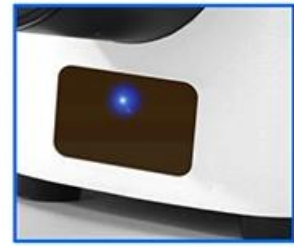
WF10x/22mm



WF15x/16mm



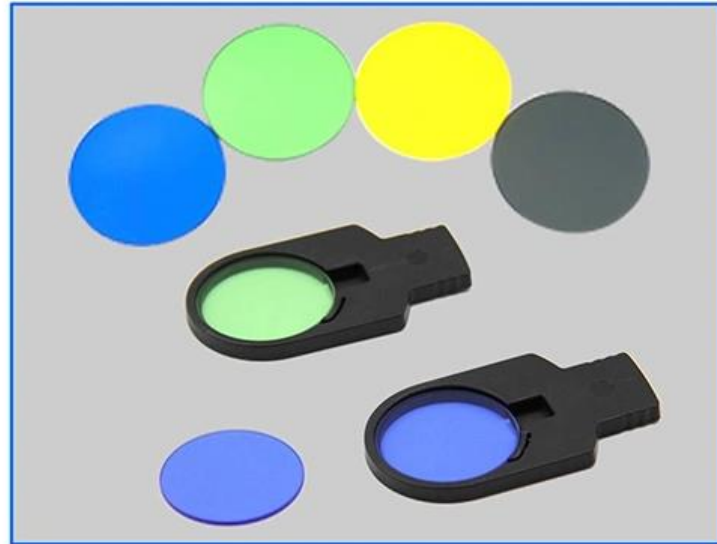
WF20x/12mm



ECO, Auto Power Off System



**Long Working Distance
Quickly Detachable
N.A.0.3 Condenser**



**Filter: Blue, Green;
Amber; Grey
(Optional)**



**LWD Infinity Plan Objective: 10x, 20x, 40x
LWD Infinity Plan Phase Contrast Objective: 20x**



**C-MOUNT 1.0x,
Focus Adjustable**

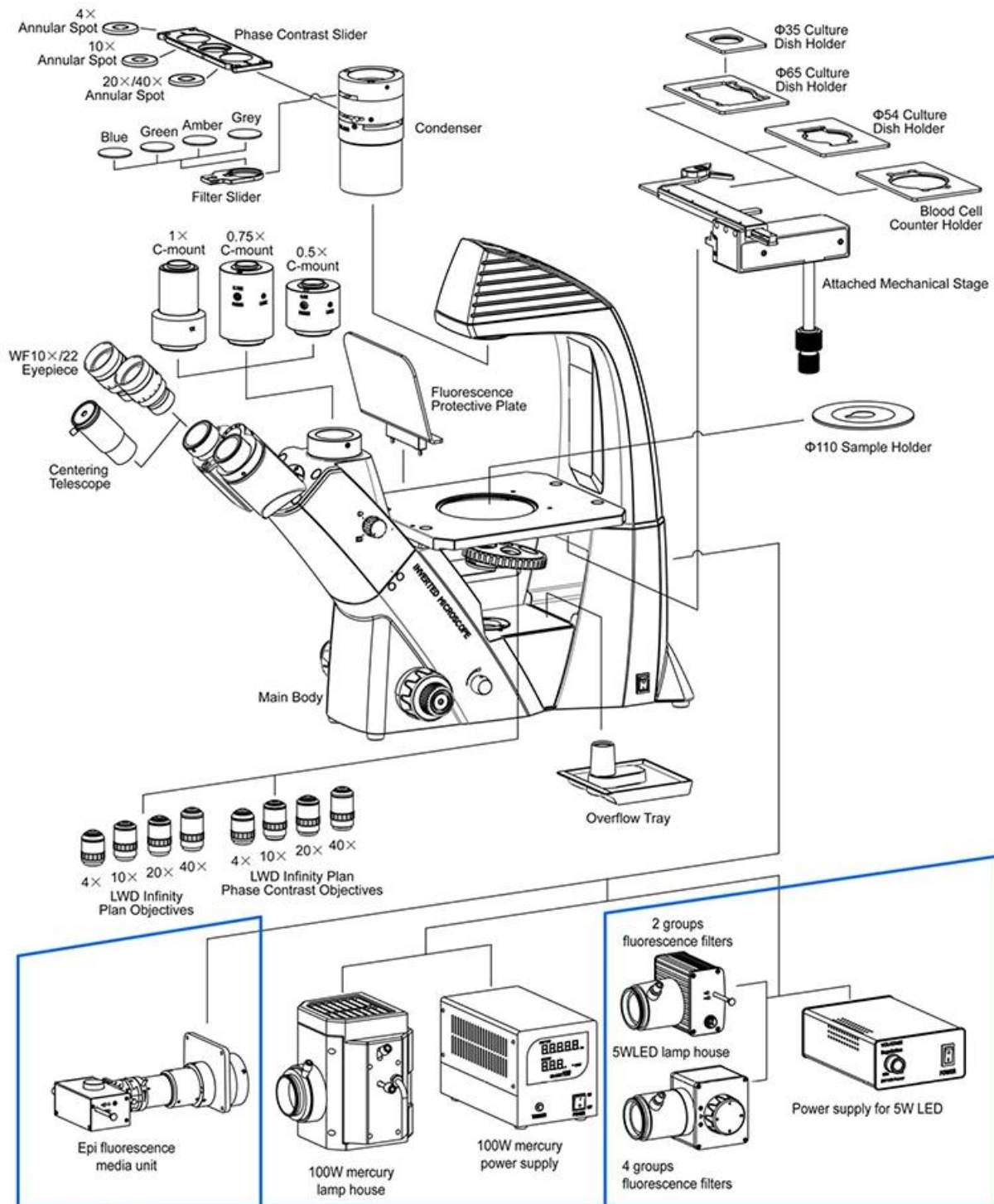


**Centering Telescope 11x (Optional)
Annular Spot 10x/20x/40x**



**C-Mount 0.75x,
Focus Adjustable**

General Layout Diagram



Epi fluorescence media unit

100W mercury lamp house

100W mercury power supply

2 groups fluorescence filters

5WLED lamp house

4 groups fluorescence filters

Power supply for 5W LED

Epi Fluorescence Illumination With
 B,G,V,VU Or B,G Fluorescent Filter,
 100W Mercury Lamp House
 100W Mercury Power Box, Digital Disp.
 Fluorescent Slide 3 Holes
 Ultraviolet Protection Barrier
 China 100W Mercury Lamp

